



# The Sawyer

3 Beds | 2½ Baths | 1,880 Sq Ft\*



CRAFTSMAN



COTTAGE



COTTAGE B



FARMHOUSE A



FARMHOUSE B



MODERN

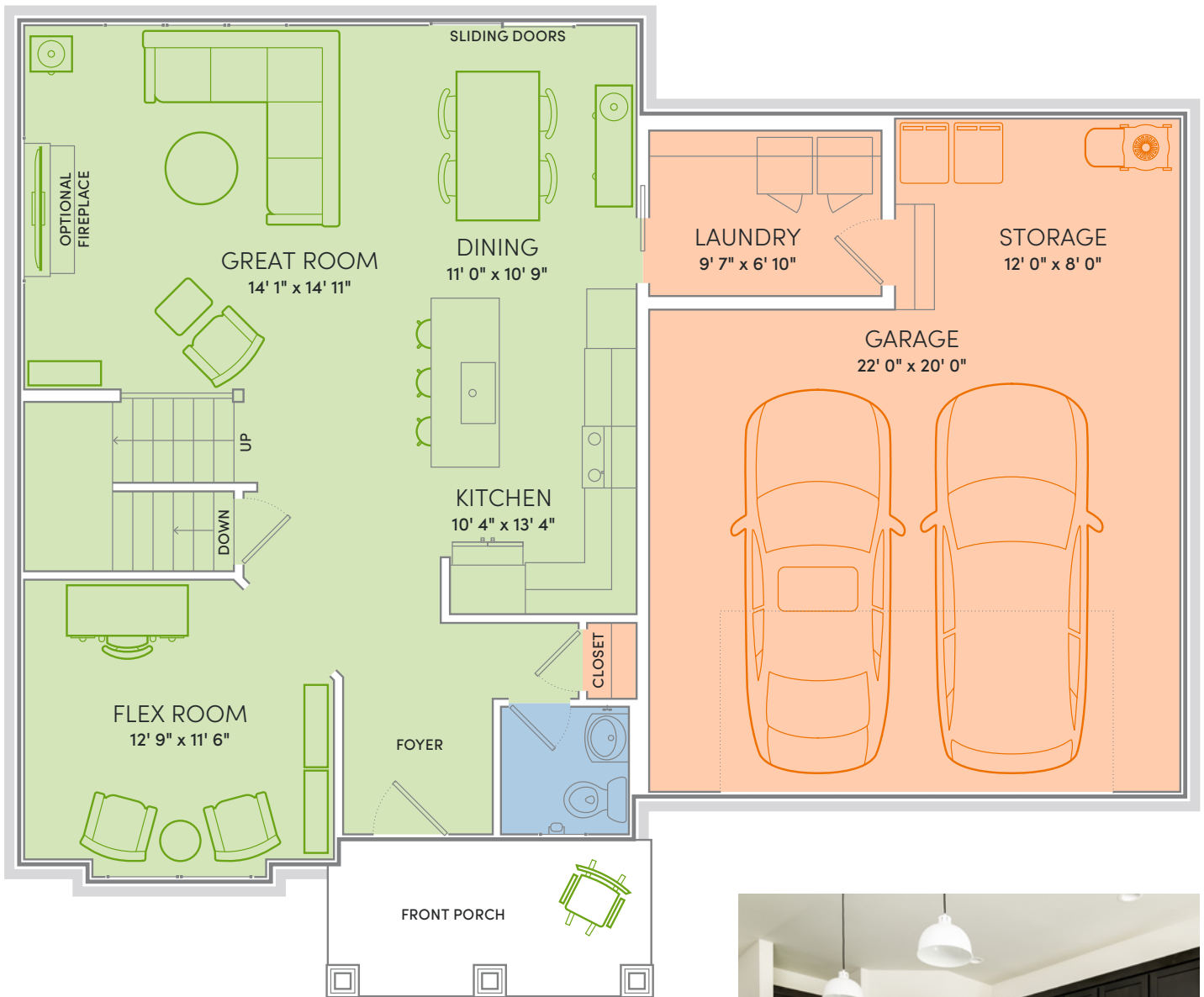


PRAIRIE

\*Exterior design, square footage and product selections may vary by elevation and neighborhood.

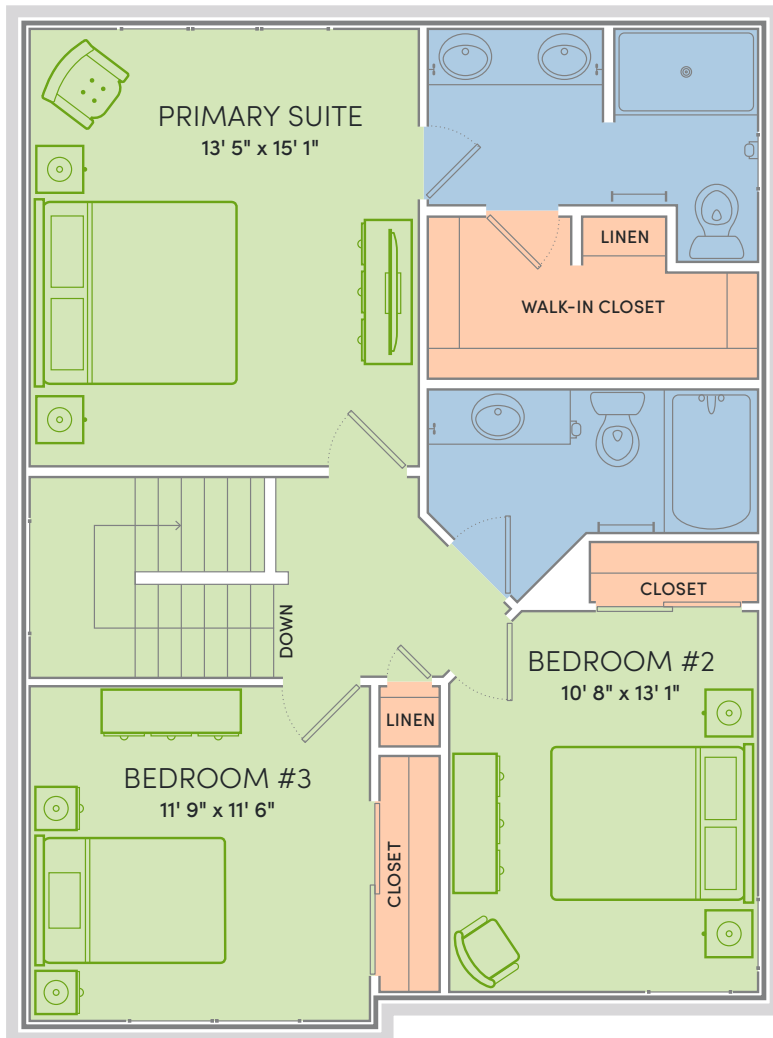
**WE MAKE BUILDING EASY.®** When you build a Veridian home, you get much more than a home designed around you and your dreams. You get the peace of mind that comes with nationally-recognized, award-winning, quality craftsmanship and energy efficiency. You get a home that's constructed using innovative building materials as well as the newest technology and building practices. The result is a high-performing, green and energy efficient home that's a healthier home for you and your pocketbook. And when you build with Veridian Homes, you build with a team of specifically trained experts who make homebuilding easy.

## THE SAWYER HOME PLAN



**A HOME AS RESOURCEFUL AS YOU ARE.** The flex room might make the perfect home office now, but it could also be one creative craft studio down the road. The kitchen provides ample space for preparing elegant feasts, but it also features a handy breakfast bar for more humble meals. Welcome to The Sawyer.





## Floor Plan Features

- Kitchen open to dining and living spaces
- Convenient kitchen island and breakfast bar
- Quartz or granite kitchen counters
- Primary suite features large walk-in closet with linen shelves and private bath
- Flex room for formal dining, office, etc.
- First floor laundry/mudroom
- Custom Auburn Ridge® cabinetry
- Full basement
- Additional storage space in garage
- Smart Home+ technology
- Energy expert certified
- Award-winning, high-performance home

## Optional Features

- Custom built-ins
- Deck and patio spaces
- Finished lower level
- Fireplace
- Personalized closet systems
- Solid surface countertops in baths
- Tile shower
- Personalize your home with thousands of options found within our Design Studio



For Signature Series home plans, please talk with your New Home Specialist to learn more about plan-specific details.



- Energy Expert Certified
- Insulated Entry Door
- Low-E Insulated Windows
- Insulated Garage Door
- Electronic Programmable Thermostat
- Energy Efficient Led Lighting
- Moen® Low Flow Fixtures
- Energy Star® Bath Fans
- Energy Efficient Air Conditioner, Furnace, and Hybrid Water Heater
- Radon Mitigation System
- 2x6 Framed Walls, 24 on Center
- Tyvek® House Wrap
- Advanced Air Sealing
- Spray Foam Insulation
- Advanced Weather Blocking Adhesive Membrane

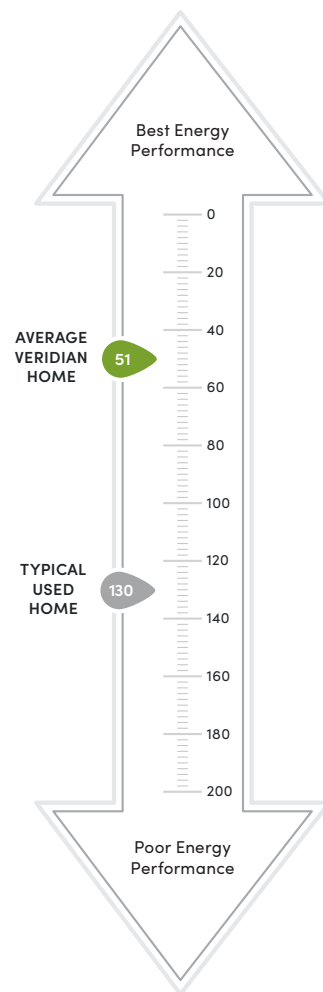


## This Home is Quality 360® Certified

Every high-performance, Veridian home is tested by a third-party company, Perfect Environmental Performance (PEP). This testing allows us to individually certify each and every home we build meets the high standards of the Quality 360 program.

The Quality 360 program requires that all homes meet the highest standards in energy-efficiency, combustion safety, comfort and durability. This means that your dream home will not only look like a dream, but it will run like one too.

- Exceeding Expectations
- Better Energy Performance
- Heating/Cooling Loss Protection
- Peace of Mind



**\$310 in savings every month!\***

LOWER INDEX = HIGHER EFFICIENCY.

A HERS Index is the industry standard by which a home's energy efficiency is measured. A Veridian home receives a rating 56 HERS or better, averaging 51 HERS, compared a typical used home, which rates at 130 HERS – that's greater than a 70% increase in total energy performance. This means that your dream home will not only look like a dream, but it will run like one too.

\*Estimated average monthly energy bill savings with The Sawyer. The costs were calculated using REM/Rate™ 12.97 and the HERS Score for the reference homes listed in the arrow chart and were published by RESNET, as compared to the typical used home. The typical used and new home scores were determined by the U.S. Department of Energy.