



# The Chelsea

3 Beds | 2½ Baths | 1,528 Sq Ft\*



**FARMHOUSE**

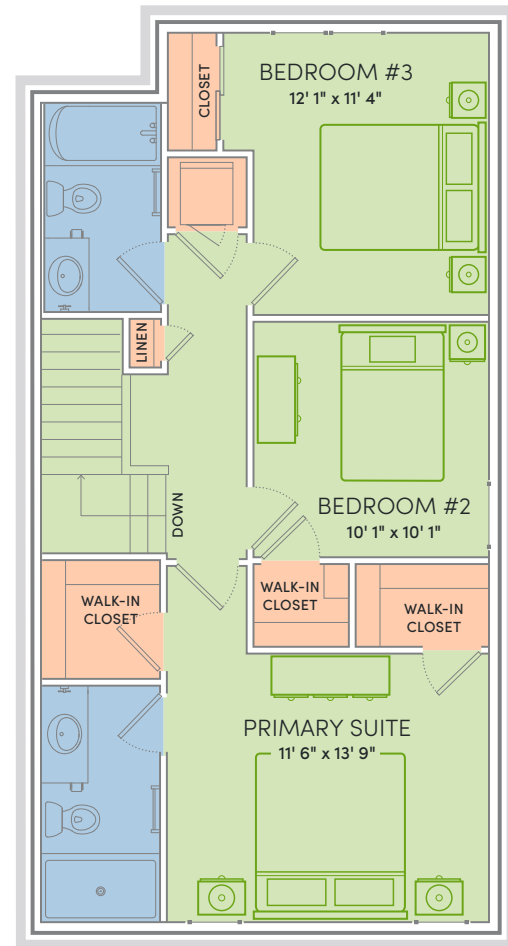
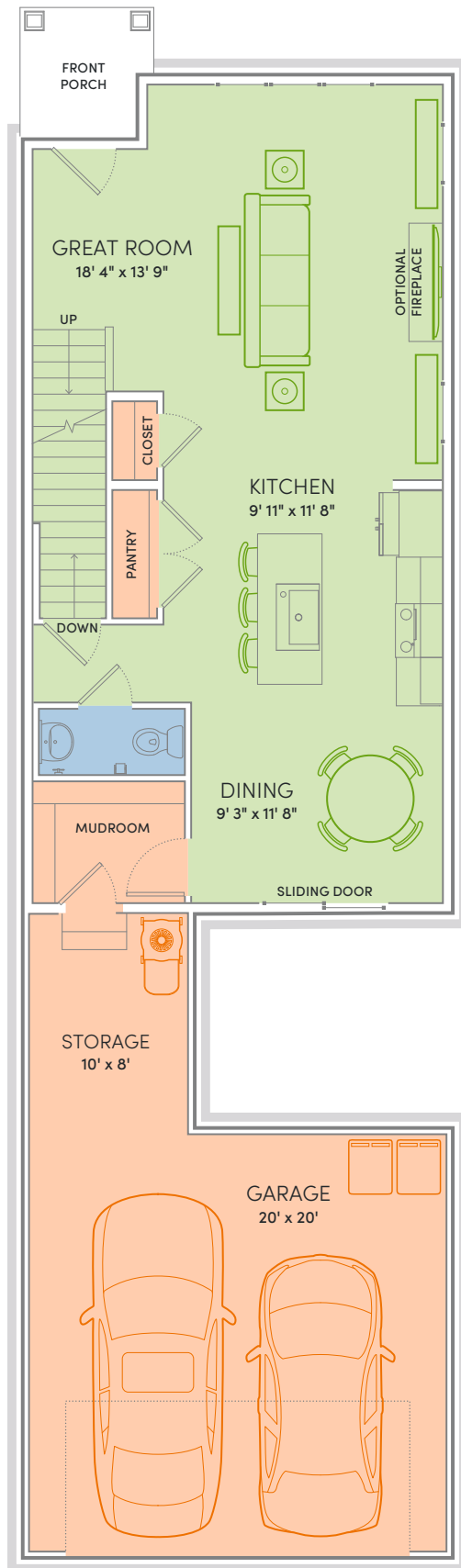


**FRENCH COUNTRY**

**EVERY HOME TELLS A STORY — AND THE CHELSEA WAS DESIGNED TO BEGIN A BEAUTIFUL ONE.**

This two-story carriage lane home strikes a beautiful balance between charm and contemporary living. Step inside to an open, airy main floor that invites connection. From simple weeknight dinners to lively gatherings, this inviting layout makes every moment feel natural. Graceful yet grounded, The Chelsea feels both classic and current — a home ready to hold every chapter of what comes next.

\*Exterior design, square footage and product selections may vary by elevation and neighborhood. Image is an artistic rendering of the home; colors and features may vary.



## Floor Plan Features



- Locally made, custom Auburn Ridge® cabinetry, doors, and trim crafted to last
- Quality finishes from trusted brands like Kohler®, Moen®, and Shaw®
- Stylish kitchen with island and quartz countertops
- Durable luxury vinyl plank flooring in main living areas
- Designer lighting collections curated from Kichler® and Visual Comfort & Co.
- Painted solid-core doors for superior sound control
- Smart Home+ technology with integrated lighting control
- One-year warranty for added peace of mind
- Personalize your home on our Design Studio



### ENERGY EXPERT CERTIFIED

Every Veridian home is tested by a third-party to certify it meets the high standards of the Quality 360® program.