



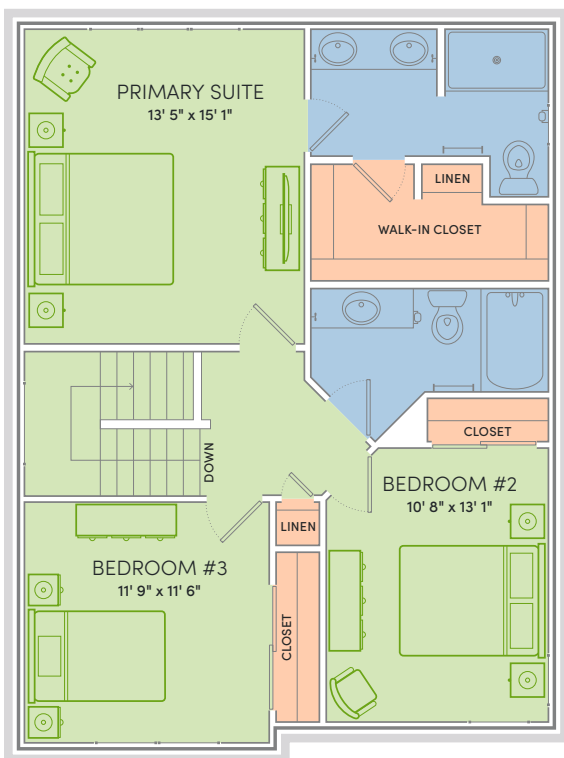
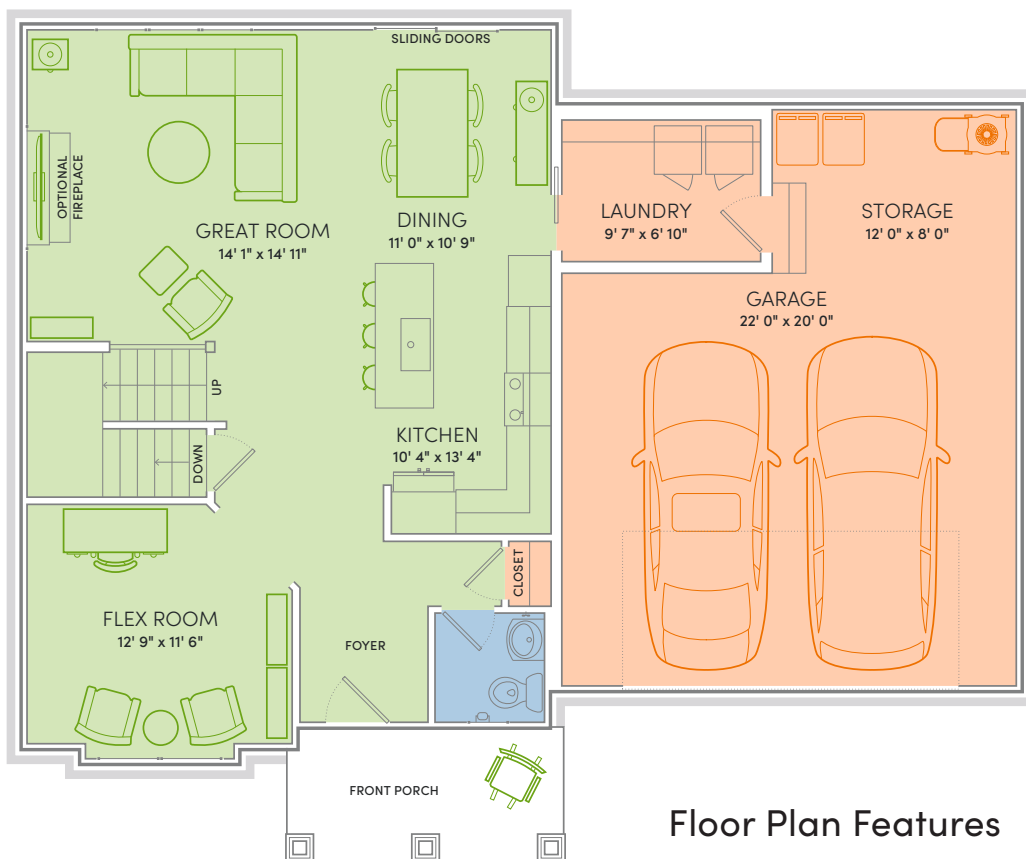
The Sawyer

3 Beds | 2½ Baths | 1,880 Sq Ft*



A HOME AS RESOURCEFUL AS YOU ARE. The flex room may be the perfect home office today, but it can easily transform into a creative craft studio tomorrow. The kitchen offers ample space for preparing elegant feasts, and the island is ready for quick morning routines. When it's time to unwind, retreat to the spacious primary suite, complete with a private bath designed for comfort and calm. Welcome to The Sawyer.

*Exterior design, square footage and product selections may vary by elevation and neighborhood. Image is an artistic rendering of the home; colors and features may vary.



Floor Plan Features



- Locally made, custom Auburn Ridge® cabinetry, doors, and trim crafted to last
- Quality finishes from trusted brands like Kohler®, Moen®, and Shaw®
- Stylish kitchen with island and quartz countertops
- Durable luxury vinyl plank flooring in main living areas
- Designer lighting collections curated from Kichler® and Visual Comfort & Co.
- Painted solid-core doors for sound control
- Smart Home+ technology with integrated lighting control and built-in USB connectivity
- One-year warranty for added peace of mind
- Personalize your home with thousands of Design Studio options



ENERGY EXPERT CERTIFIED
Third-party tested to certify each home meets the high standards of the Quality 360® program.