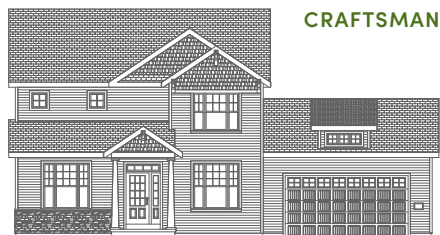




The Nolen

3 Beds | 2½ Baths | 2,443 Sq Ft*



CRAFTSMAN



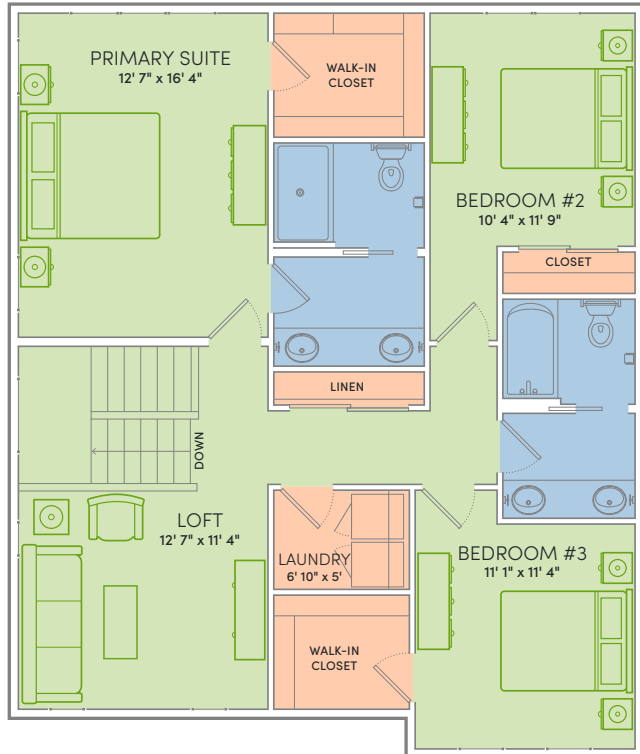
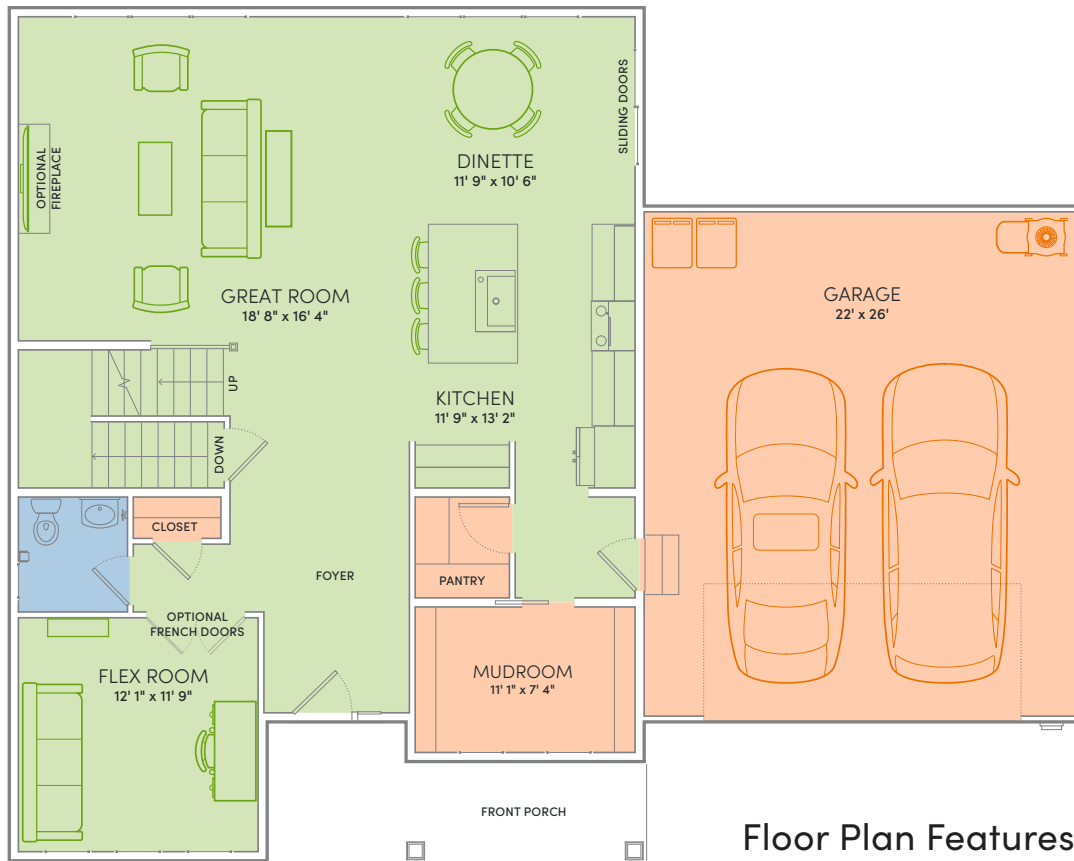
FARMHOUSE



FRENCH COUNTRY

THE NOLEN BRINGS TOGETHER the spaces that matter most with a thoughtful layout designed for everyday life. An open kitchen, dinette, and great room create a natural hub for everything from busy weekday mornings to holiday celebrations, while a spacious pantry, mudroom, and smart storage solutions help keep life organized behind the scenes. Upstairs, a flexible loft offers room for work, play, or relaxation, and the private primary suite provides a peaceful retreat at the end of the day.

*Exterior design, square footage and product selections may vary by elevation and neighborhood. Image is an artistic rendering of the home; colors and features may vary.



Floor Plan Features



- Locally made, custom Auburn Ridge® cabinetry, doors, and trim crafted to last
- Quality finishes from trusted brands like Kohler®, Moen®, and Shaw®
- Stylish kitchen with island and quartz countertops
- Durable luxury vinyl plank flooring in main living areas
- Designer lighting collections curated from Kichler® and Visual Comfort & Co.
- Painted solid-core doors for superior sound control
- Smart Home+ technology with integrated lighting control and built-in USB connectivity
- One-year warranty for added peace of mind
- Personalize your home with thousands of Design Studio options



ENERGY EXPERT CERTIFIED
 Every Veridian home is tested by a third-party to certify it meets the high standards of the Quality 360® program.